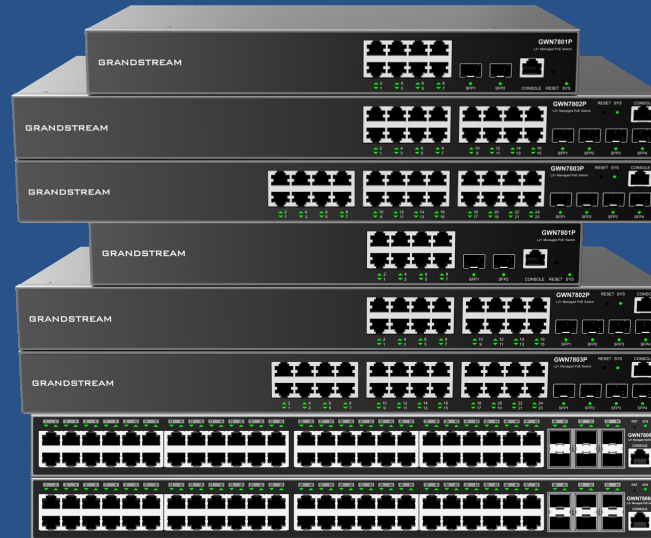


GWN Series

Network Switches



GRANDSTREAM
CONNECTING THE WORLD

GWN SERIES

Networking Solutions

Our fastest-growing product line, the GWN Series allows you to build powerful and secure networks with industry-leading setup, performance and management. It includes a full portfolio of APs, Routers, Managed and Unmanaged Network Switches and 3 free management options.





WHY GWN SERIES SOLUTIONS?



3-Year Warranty

Standard on all GWN models



Free Management

GWN.Cloud, GWN Manager and embedded controllers



Secure Out-of-the-Box

Enterprise-grade security on all models



Easy Installation

Add new APs, routers & switches by scanning a barcode with the GWN App



Remote Management

Provides scalability and flexible management options



Advanced Features

Take advantage of Captive portals, Mesh, VPN, QoS and more



One-Stop-Shop

Grandstream offers everything needed to build wired and Wi-Fi networks



In-Stock and Available Now

Contact your distributor today



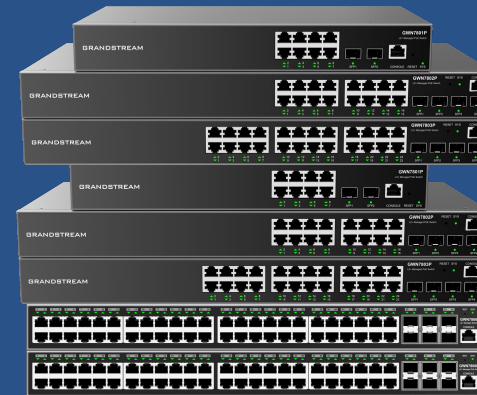
GWN Series Network Switches



GWN7830 Series
Layer 3 Aggregation
Managed Network
Switches
3 models



GWN7810 Series
Layer 3 Managed
Network Switches
5 models



GWN7800 Series
Layer 2+ Managed
Network Switches
8 models



**GWN7700 &
GWN7700M Series**
Unmanaged
Network Switches
11 models

CONNECT ENDPOINTS TO YOUR NETWORK

Build, Manage & Deploy Your Network with Grandstream



IP Phones



Wi-Fi APs & Routers



IP Cameras



All Other PoE Endpoints

**GWN7800 series supports all brands of devices*



GWN7810 Series

Layer 3 Managed Network Switches

GWN7811(P) – GWN7812P – GWN7813(P)



5 models
3 models with PoE
2 models without PoE



8, 16, or 24 Gigabit
ports, 2 or 4x 10 Gbps
SFP+ ports



Managed via local WebUI,
CLI, GWN.Cloud or GWN
Manager



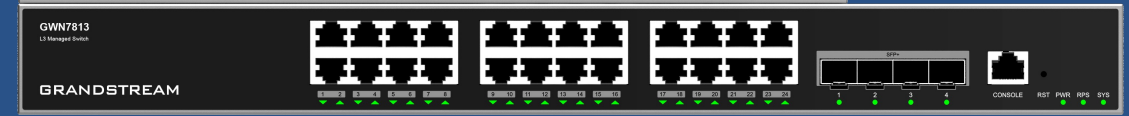
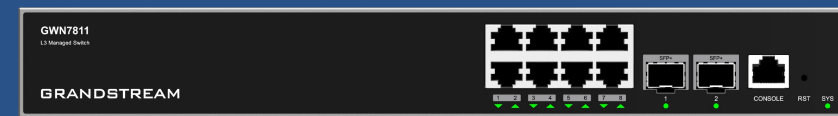
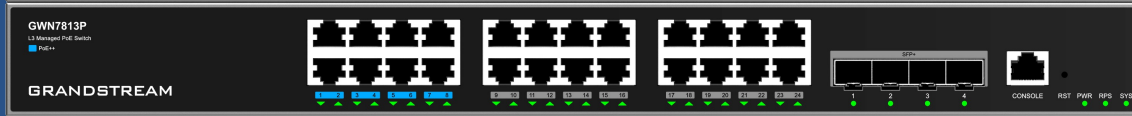
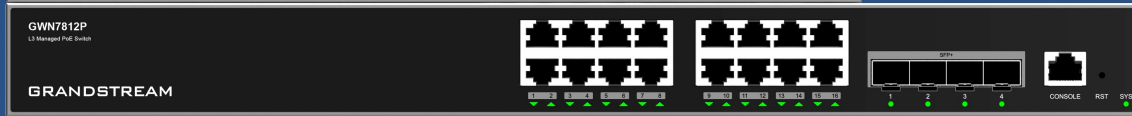
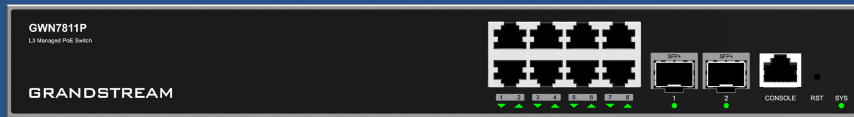
Built-in QoS and VLAN
For advanced network
prioritization and
segmentation



Supports 56 Gbps,
112 Gbps or 128 Gbps
switching capacity

GWN7810 SERIES LAYER 3 NETWORK SWITCHES

Model Comparison



GWN7811

8 Gigabit ports
2 10-Gbps SFP+ ports
56 Gbps Switching
5 Link Aggregation
Metal Enclosure
Desktop/Wall/Rack Mount

GWN7811P

8 Gigabit ports
2 10-Gbps SFP+ ports
8 PoE Ports
Up to 30W p/ port
56 Gbps Switching
5 Link Aggregation
Metal Enclosure
Desktop/Wall/Rack Mount

GWN7812P

16 Gigabit ports
2 10-Gbps SFP+ ports
16 PoE Ports
Up to 30W p/ port
112 Gbps Switching
10 Link Aggregation
Metal Enclosure
2 Fans
Desktop/Wall/Rack Mount

GWN7813

24 Gigabit ports
4 10-Gbps SFP+ ports
128 Gbps Switching
14 Link Aggregation
Metal Enclosure
Desktop/Wall/Rack Mount

GWN7813P

24 Gigabit ports
4 10-Gbps SFP+ ports
24 PoE Ports
Up to 60W p/ port (1-8)
Up to 30W p/ port (9-24)
128 Gbps Switching
14 Link Aggregation
Metal Enclosure
3 Fans
Desktop/Wall/Rack Mount

PoE

GWN7810 Series Layer 3 Switches



- Available on GWN7811P, GWN7812P, and GWN7813P
- 8, 16, or 24 ports
- Supports dynamic PoE/PoE+ power allocation per port
- IEEE 802.3af/at PoE standards
- Up to 30W per port
- GWN7813P: Supports PoE++ (UP TO 60W per port) on ports 1-8 (ports 9-24 support 30W PoE)





GWN7830 Series

Layer 3 Aggregation Managed Network Switches

GWN7830 – GWN7831 – GWN7832



3 models
2 or 4 Gigabit ports,
6 or 24 Gigabit SFP ports,
4 or 12x 10 Gbps SFP+ ports



Managed via local WebUI,
CLI, GWN.Cloud or GWN
Manager



Built-in QoS and VLAN
For advanced network
prioritization and
segmentation



Supports 96 Gbps,
128 Gbps or 240 Gbps
switching capacity

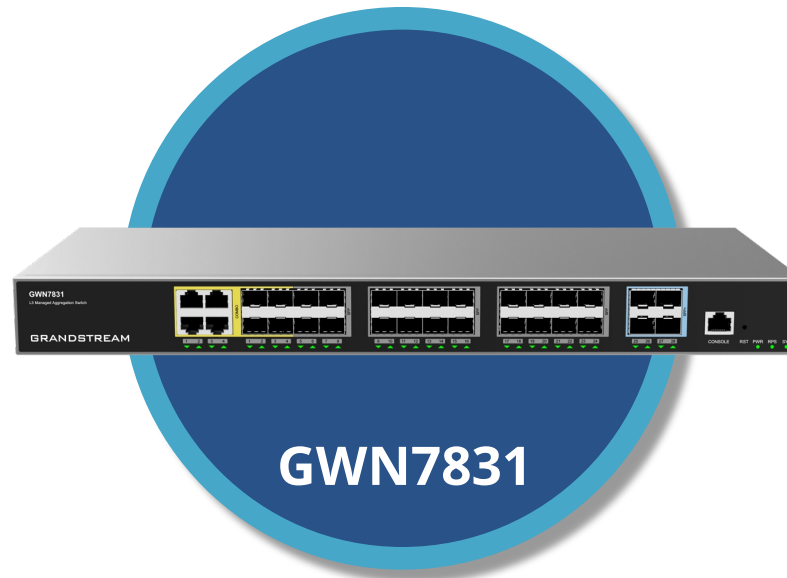
GWN7830 SERIES LAYER 3 AGGREGATION SWITCHES

Network Switch Model Comparison



GWN7830

- 2 Gigabit ports
- 6 Gigabit SFP Ports
- 4 10-Gbps SFP+ ports
- 96 Gbps Switching
- 6 Link Aggregation
- Metal Enclosure
- Desktop/Wall/Rack Mount



GWN7831

- 4 Gigabit ports
- 24 Gigabit SFP Ports
- 4 10-Gbps SFP+ ports
- 128 Gbps Switching
- 14 Link Aggregation
- Metal Enclosure
- 2 Fans
- 12V/60W External RPS
- Desktop/Wall/Rack Mount



GWN7832

- 12 10-Gbps SFP+ ports
- 240 Gbps Switching
- 6 Link Aggregation
- Metal Enclosure
- 2 Fans
- 12V/60W External RPS
- Desktop/Wall/Rack Mount

MANAGEMENT OPTIONS – GWN7810/7830 SERIES SWITCHES

GWN.CLOUD



- ☒ **FREE**
- ☒ **AWS CLOUD PLATFORM**
- ☒ **MOBILE APP & WEB UI**
- ☒ **UNLIMITED DEVICES**
- ☒ **SECURE CLOUD PROVISIONING**

GWN.MANAGER



- ☒ **FREE**
- ☒ **SOFTWARE CLIENT**
- ☒ **LOCAL SERVER DEPLOYMENTS**
- ☒ **UP TO 3,000 DEVICES**

LOCAL WEB UI



- ☒ **FREE**
- ☒ **EMBEDDED IN WEB UI**
- ☒ **ALLOWS SWITCH TO MANAGE ITSELF**
- ☒ **ALSO SUPPORTS COMMAND LINE INTERFACE (CLI)**

SECURITY PROTECTION & ENCRYPTION

GWN7810 and GWN7830 Series Layer 3 Switches



- Static MAC table, dynamic MAC table to allow data transmission, and filter MAC table to avoid network attacks.
- Packet filtering based on binding IP address, MAC address, VLAN and port
- 802.1X, RADIUS, AAA and TACACS+ authentications to provide authentication and authorization for LAN devices
- ARP Inspection protects against ARP spoofing
- IP Source Guard to prevent illegal address spoofing
- DoS Protection, including Land Attack, Smurf Attack, TCP SYN Attack, Ping Flooding and more.
- Supports port security to prevent MAC address attacks and control the network traffic of the port
- DHCP Snooping
- Static & dynamic MAC table with filtering



SWITCHING CAPABILITY

GWN7810 and GWN7830 Series Layer 3 Switches



- GWN7810 Series:
 - 28 Gbps (GWN7811 & GWN7811P)
 - 56 Gbps (GWN7812P)
 - 64 Gbps (GWN7813 & GWN7813P)
- GWN7830 Series:
 - 96 Gbps (GWN7830)
 - 128 Gbps (GWN7831)
 - 240 Gbps (GWN7832)
- 16K static, dynamic and filtering MAC addresses
 - GWN7832: 32K MAC addresses
- 4K VLANs, port-based VLAN, IEEE 802.1Q VLAN tagging, voice VLAN
- VLAN virtual interface
- Link aggregation groups:
 - 5 (GWN7811, GWN7811P)
 - 6 (GWN7830, GWN7832)
 - 10 (GWN7812P)
 - 14 (GWN7813, GWN7813P, GWN7831)
- Spanning tree, 32 instances for STP/RTSP/MSTP
 - GWN7832: 64 instances



BUILT-IN QoS

GWN7810 and GWN7830 Series Layer 3 Switches



- Port Priority
- Priority Mapping
- Queue scheduling including SP, WRR, WFQ, SP-WRR, & SP-WFQ
- Traffic shaping
- Rate limit
- 2k ACL for ethernet, IPv4, and IPv6
- Auto detection and prioritization of voice, video and other latency sensitive packets (pending)



GWN7810 & GWN7830 Series Layer 3 Switches

Deployment Scenarios



Enterprises



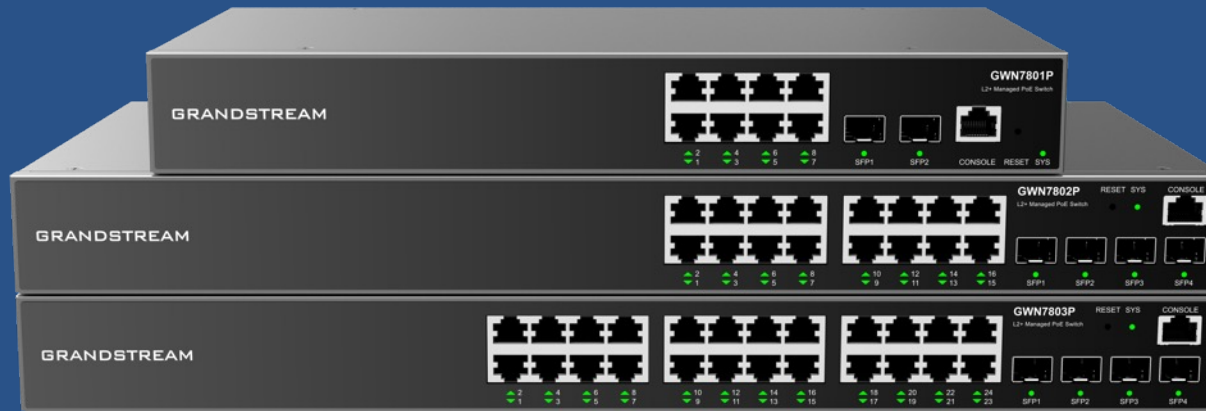
Medium and Large
Businesses



GWN7800 Series

Layer 2+ Managed Network Switches

GWN7801(P) – GWN7802(P) – GWN7803(P) – GWN7806(P)



8 models
4 models with PoE
4 models without PoE



8, 16, 24 or 48
Gigabit ports,
2, 4, or 6 Gigabit SFP ports



Managed via Web UI, CLI,
GWN.Cloud or GWN
Manager



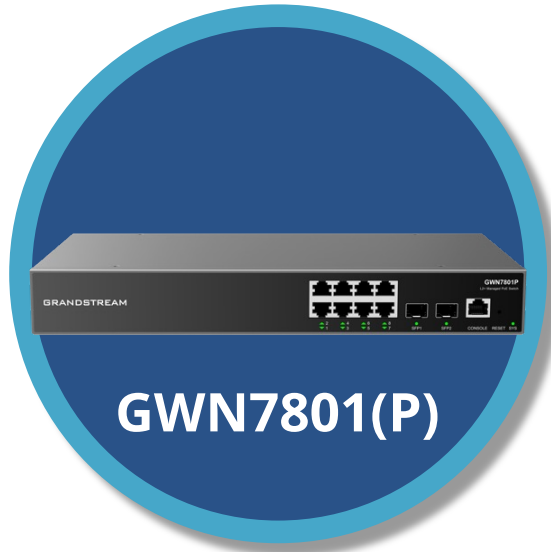
Built-in QoS
& Advanced VLAN



Supports IPv4
and IPv6

GWN7800 SERIES LAYER 2+ MANAGED SWITCHES

Model Comparison



8 Gigabit ports
2 SFP Ports
20 Gbps Switching Capacity
Desktop Mount

GWN7801P
8 PoE Ports
120W Max PoE Power



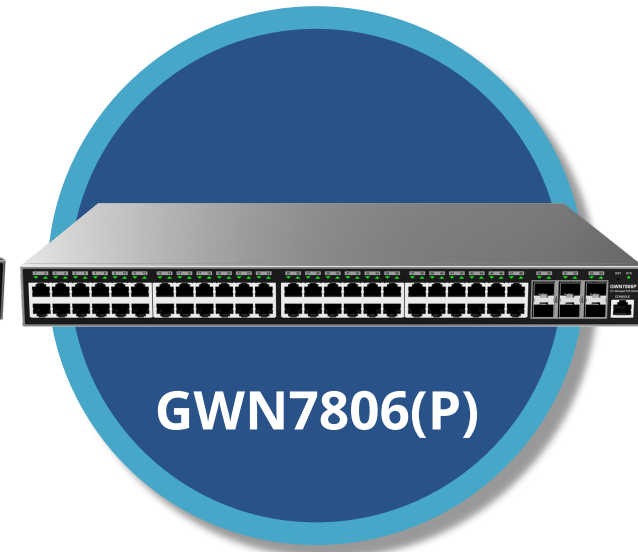
16 Gigabit ports
4 SFP Ports
40 Gbps Switching Capacity
Desktop & Rack-Mount

GWN7802P
16 PoE Ports
240W Max PoE Power
Integrated Fan



24 Gigabit ports
4 SFP Ports
56 Gbps Switching Capacity
Desktop & Rack-Mount

GWN7803P
24 PoE Ports
360W Max PoE Power
Integrated Fan



48 Gigabit ports
6 SFP Ports
216 Gbps Switching Capacity
Desktop & Rack-Mount

GWN7806P
48 PoE Ports
400W Max PoE Power
3 Integrated Fans

GWN7806(P)

Enhanced Reliability Features



- **Stacking**
 - Easily manage up to 16 switches in one interface while creating redundant backup between devices
- **Enhanced Reliability**
 - Fault detection, device protection, dual boot-up, dual system file redundancy, link aggregation, storm control, and more
- **Green Energy Efficiency**
 - Intelligent control of the integrated fan adjusts fan speeds based on environmental temperatures and provides precise temperature control and energy savings



MANAGEMENT OPTIONS – GWN7800 SERIES SWITCHES

GWN.CLOUD



- ☒ **FREE**
- ☒ **AWS CLOUD PLATFORM**
- ☒ **MOBILE APP & WEB UI**
- ☒ **UNLIMITED DEVICES**
- ☒ **SECURE CLOUD PROVISIONING**

GWN.MANAGER



- ☒ **FREE**
- ☒ **SOFTWARE CLIENT**
- ☒ **LOCAL SERVER DEPLOYMENTS**
- ☒ **UP TO 3,000 DEVICES**

LOCAL WEB UI



- ☒ **FREE**
- ☒ **EMBEDDED IN WEB UI**
- ☒ **ALLOWS SWITCH TO MANAGE ITSELF**
- ☒ **ALSO SUPPORTS COMMAND LINE INTERFACE (CLI)**

PoE

GWN7800 Series Layer 2+ Switches



- Available on GWN7801P, GWN7802P, GWN7803P & GWN7806P
- 8, 16, 24 or 48 ports
- Supports dynamic PoE/PoE+ power allocation per port
- IEEE 802.3af/at PoE standards
- Up to 30W per port



SECURITY PROTECTION & ENCRYPTION

GWN7800 Series Layer 2+ Switches



- Packet filtering based on binding IP address, MAC address, VLAN and port
- 802.1X, RADIUS, AAA and TACACS+ authentications to provide authentication and authorization for LAN devices
- ARP Inspection protects against ARP spoofing
- IP Source Guard to prevent illegal address spoofing
- DoS Protection, including Land Attack, Smurf Attack, TCP SYN Attack, Ping Flooding and more.
- Supports port security to prevent MAC address attacks and control the network traffic of the port
- DHCP Snooping
- Static and dynamic MAC table with MAC table filtering



SWITCHING CAPABILITY

GWN7800 Series Layer 2+ Switches



- 8K static, dynamic and filtering MAC addresses
- GWN7806(P): 32K static, dynamic & filtering of MAC addresses
- 4K VLANs, port-based VLAN, IEEE 802.1Q VLAN tagging, voice VLAN
- VLAN virtual interface
- 8 link aggregation groups
- GWN7806(P) - 27 link aggregation groups
- Spanning tree, 64 instances for STP/RTSP/MSTP



BUILT-IN QoS

GWN7800 Series Layer 2+ Switches



- Port Priority
- Priority Mapping
- Queue scheduling including SP, WRR, WFQ, SP-WRR, & SP-WFQ
- Traffic shaping
- Rate limit
- 1.5k ACL for ethernet, IPv4, and IPv6
- Auto detection and prioritization of voice, video and other latency sensitive packets (pending)



GWN7800 Series Managed Network Switches

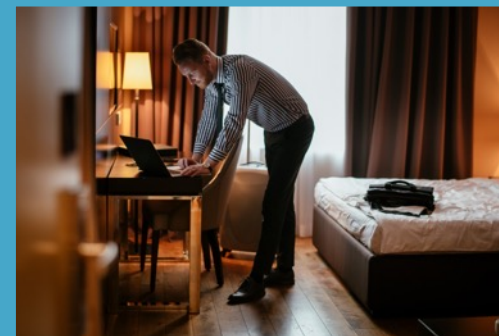
Deployment Scenarios



Enterprises



Small-to-Medium Business



Hotels & Convention Centers



Schools & Universities



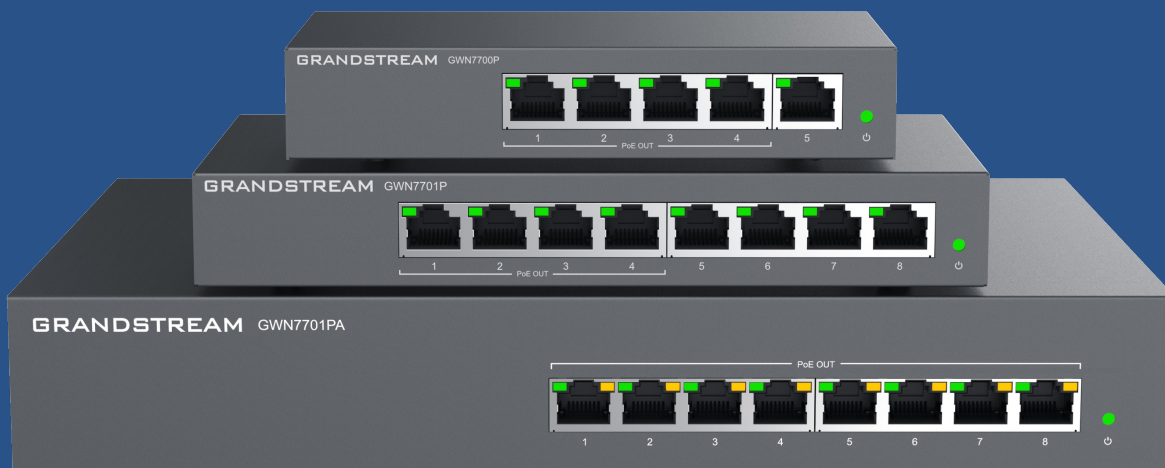
Healthcare



Call Centers



GWN7700 Series Unmanaged Network Switches



9 models
4 models with PoE
5 models without PoE



5 or 8 Gigabit ports,
4 or 8 Gigabit PoE ports
-Up to 30W p/port



LED Indicators:
Per port: link/activity/speed
Per device: power



Broadcast/multicast/
Unicast storm control
to monitor traffic levels



Auto MDI/MDIX
crossover on all ports

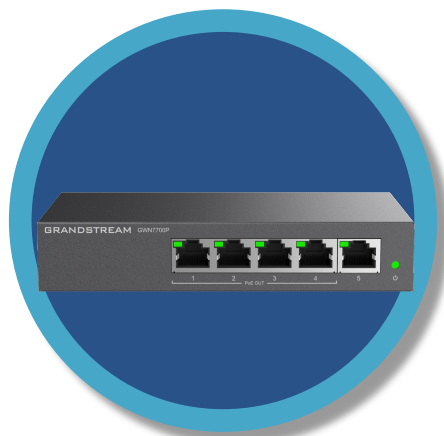
GWN7700 SERIES UNMANAGED NETWORK SWITCHES

Model Comparison



GWN7700

5 Gigabit ports
10 Gbps Switching
Plastic Enclosure
Desktop & Wall Mount



GWN7700P

5 Gigabit ports
4 PoE Ports
Up to 30W p/ port
10 Gbps Switching
Metal Enclosure
Desktop & Wall Mount



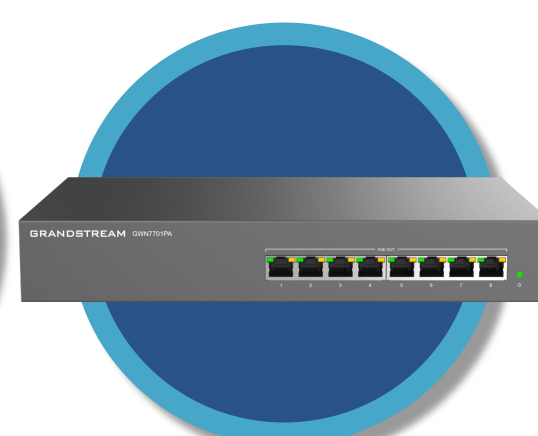
GWN7701

8 Gigabit ports
16 Gbps Switching
Plastic Enclosure
Desktop & Wall Mount



GWN7701P

8 Gigabit ports
4 PoE Ports
Up to 30W p/ port
16 Gbps Switching
Metal Enclosure
Desktop & Wall Mount



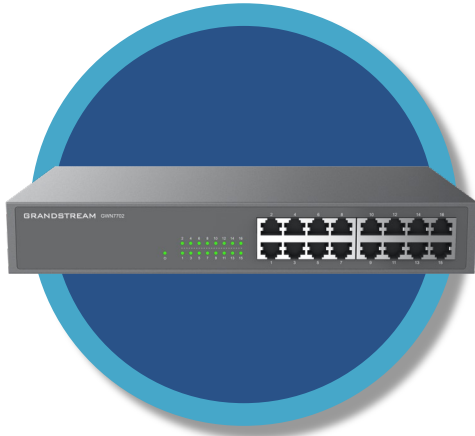
GWN7701PA

8 Gigabit ports
8 PoE Ports
Up to 30W p/ port
16 Gbps Switching
Metal Enclosure
Desktop/Wall/Rack Mount



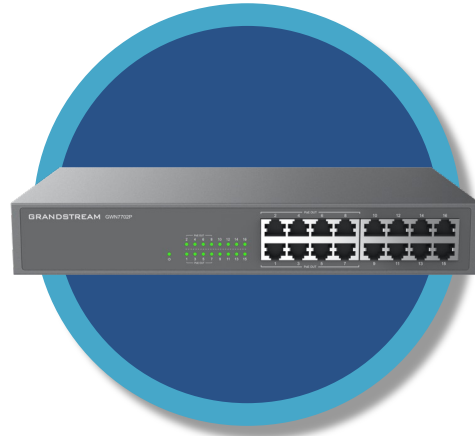
GWN7700 SERIES UNMANAGED NETWORK SWITCHES

Model Comparison



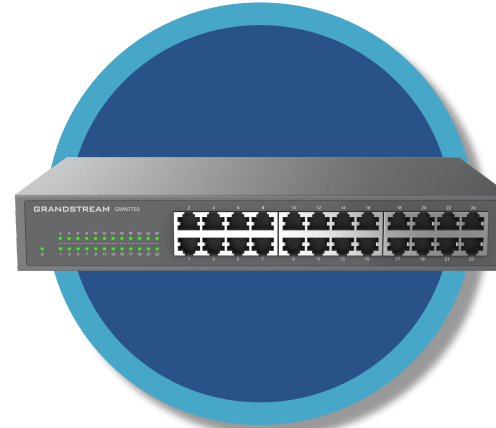
GWN7702

16 Gigabit ports
32 Gbps Switching
Metal Enclosure
Desktop & Wall Mount



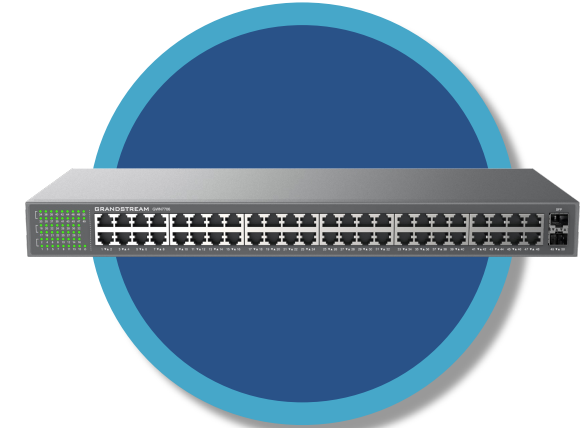
GWN7702P

16 Gigabit ports
8 PoE Ports
Up to 30W p/ port
32 Gbps Switching
Metal Enclosure
Desktop & Wall Mount



GWN7703

24 Gigabit ports
48 Gbps Switching
Metal Enclosure
Desktop & Wall Mount



GWN7706

48 Gigabit ports
16 Gbps Switching
Metal Enclosure
Desktop & Wall Mount



PoE

GWN7800 Series Layer 2+ Switches



- Available on GWN7700P, GWN7701P, and GWN7701PA
- 4 or 8 ports
- Supports dynamic PoE/PoE+ power allocation per port
- Up to 30W per port
- Port priority setting



GWN7700 Series Unmanaged Switches

Deployment Scenarios



Small-to-Medium Businesses



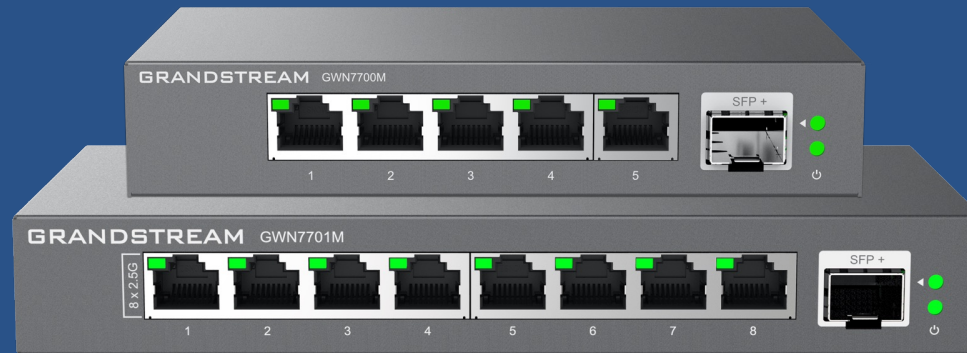
Home & Home Office



GWN7700M Series

Unmanaged 2.5G Multi-Gigabit Switches

GWN7700M & GWN7701M



5 or 8 Multi-Gigabit ports
provide
100/1000/2500Mbps
connectivity



1x SFP+ Fiber Port
With 1-Gig or 10 -Gig
connectivity



LED Indicators:
Per port: link/activity
Per device: power



Broadcast/multicast/
Unicast storm control
to monitor traffic levels



Auto MDI/MDIX
crossover on all ports

GWN7700M SERIES UNMANAGED 2.5 MULTI-GIGABIT

Network Switch Model Comparison



5 100/1000/2500Mbps ports
1 SFP+ Fiber Port
45 Gbps Switching Capacity
Desktop & Wall-Mount
Metal Enclosure
Fan-less



8 100/1000/2500Mbps ports
1 SFP+ Fiber Port
60 Gbps Switching Capacity
Desktop & Wall-Mount
Metal Enclosure
Fan-less



GWN7700M Series Unmanaged 2.5 Multi-Gig Switches

Deployment Scenarios



Small-to-Medium Businesses
*Especially those who rely on high-speeds
for HD video meetings, large file transfers,
streaming media, etc.*



Advanced Home Networks
*Home Automation, Smart Home,
Home Office, 4K video streaming,
4K gaming, etc.*

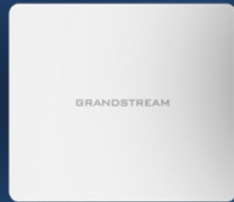
COMPLETE YOUR GRANDSTREAM SOLUTION



**GWN7800 series supports all brands of devices*



GWN SERIES INDOOR APs



GWN7602



GWN7605



GWN7615



GWN7624



GWN7625



GWN7630



GWN7660



GWN7661



GWN7662



GWN7664



GWN SERIES ACCESS POINTS

Long-Range & Outdoor APs



GWN7605LR



GWN7630LR



GWN7660LR



GWN7664LR

(WEATHERPROOF LONG-RANGE)



GWN SERIES WI-FI ROUTERS



***GWN7052 &
GWN7052F***



GWN7062



GWN SERIES WIRED ROUTERS



***GWN7001, GWN7001, and GWN7003
Business-Grade Multi-WAN Gigabit VPN Routers***



GRANDSTREAM UC SOLUTIONS



GXV series



GRP series



GXP series



DP series



WP series



GDS series



GSC series



UCM series



HT series



GXW series



GXV series

Thank You!



GRANDSTREAM

CONNECTING THE WORLD