







"Just as MartinLogan has done with their hybrid ESL [electrostatic] speakers, the seamless blend between the Motion tweeter and the woofer feels like you are listening to a full range speaker. There is a level of transparency here that just doesn't happen with other budget small speakers, and that's impressive."

– Jeff Dorgay, *TONE Audio*, on Motion 4i

"What you get is a serious value for your money. Beautiful, thoughtfully designed speakers with a sound that begs you to plant yourself on the couch and watch movies for hours on end."

– Taps Das, *Secrets of Home Theater and High Fidelity*, on Motion 15i, 30i, and 40i

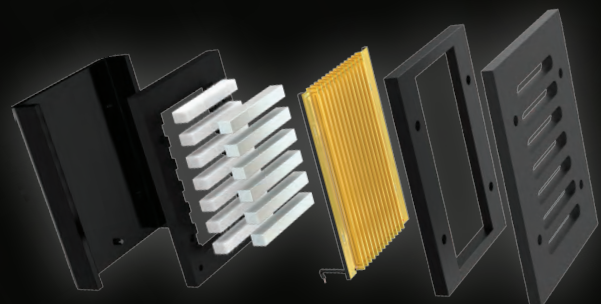




## MARTINLOGAN'S ELECTROSTATIC LEGACY.

The performance pedigree of the Motion Series is directly attributed to its close relation to MartinLogan's legendary ultra-high-end electrostatic loudspeakers. The desire to transmute that level of performance into a more traditional and affordable speaker drove the design imperatives that created the Motion Series.

Key to its success is the unique Folded Motion and Folded Motion XT tweeter technology. This thin-film transducer design packs the accuracy and delicacy of an electrostatic panel into a small space. Crimping the dramatically light-weight film into an accordion-like structure increases the surface area, giving Folded Motion tweeters 8–10 times more surface area than typical tweeters. This ideal combination of light and large produces higher levels of accuracy, more extended bandwidth, and higher output capability, all with a faster, more efficient transient response, and virtually zero distortion. In these characteristics, the Folded Motion tweeter design can mimic the performance of an electrostatic panel in the confines of a more traditional loudspeaker enclosure.



By matching the Folded Motion tweeter to high-performance drivers and woofer systems, with hand-built and custom-tuned crossovers, the Motion Series extends MartinLogan's reputation beyond the realm of the world's finest electrostatic loudspeakers. Motion speakers continue that groundbreaking standard, delivering a richly detailed musical and cinematic experience at an unrivaled price.

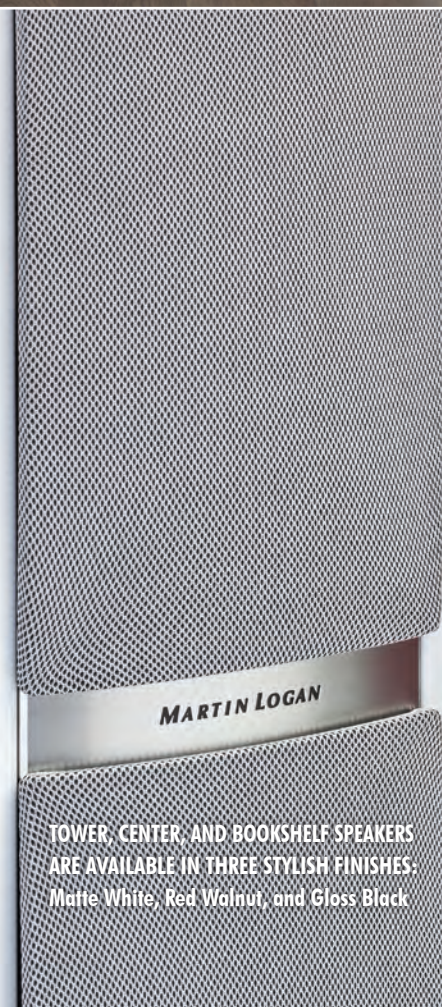
### FOLDED MOTION TWEETERS AT WORK.

An array of neodymium magnets hold constant charges. A circuit trace on the folded polyamide diaphragm, driven by the amplifier, is given a charge that continuously reverses in reaction to the audio signal. Opposite charges attract and like charges repel, causing the diaphragm to "squeeze" air like an accordion and produce sound as the charges of the magnets and diaphragm interact.



## TOWER, CENTER, AND BOOKSHELF SPEAKERS

Motion 15i • Motion 20i • Motion 30i • Motion 35XTi • Motion 40i • Motion 50XTi • Motion 60XTi



TOWER, CENTER, AND BOOKSHELF SPEAKERS ARE AVAILABLE IN THREE STYLISH FINISHES: Matte White, Red Walnut, and Gloss Black



**FOLDED MOTION TWEETERS** offer superior realism and alarming specificity—a unique sound you won't find anywhere else.

**ALUMINUM CONE DRIVERS.** Custom built, stiff, lightweight, low-distortion drivers with high-power magnet structures deliver massive excursion and sound output, preserve minute bass details, and maximize power handling capability—all without a hint of distortion. A unique concave dust cap design reinforces the strength and rigidity of the cone while reducing break up modes.

**PROPRIETARY VOJTKO™ CROSSOVER NETWORKS** feature high-quality polypropylene and low-DF electrolytic capacitors, custom-wound inductors, and thermal and current protection for a seamless sonic presentation. Straightforward topologies and pragmatic, real-world voicing delivers reliable, realistic performance in any listening space.

**PERFORMANCE-ENHANCING ENCLOSURE TECHNOLOGY.** Reinforced baffles that virtually eliminate performance-robbing cabinet resonances. Elegant, understated styling complements flat-panel televisions and other high-end components. Motion 60XTi and 50XTi feature additional interior bracing.

**CUSTOM 5-WAY TOOL-LESS BINDING POSTS** ensure a secure connection, gold-plated for better signal transfer. Bi-wiring is available on some models.





15i Bookshelf



20i Tower



40i Tower



60XTi Tower



35XTi Bookshelf



30i Center



50XTi Center





	Motion 15i	Motion 35XTi	Motion 30i	Motion 50XTi	Motion 20i	Motion 40i	Motion 60XTi
Application	Bookshelf	Bookshelf	Center	Center	Tower	Tower	Tower
Recommended Usage	Front, Surround	Front, Surround	Center	Center	Front, Surround	Front, Surround	Front, Surround
Installation	Flat Surface	Flat Surface	Flat Surface	Flat Surface	Floor	Floor	Floor
Finishes	Gloss Black, Matte White, Red Walnut	Gloss Black, Matte White, Red Walnut	Gloss Black, Matte White, Red Walnut	Gloss Black, Matte White, Red Walnut	Gloss Black, Matte White, Red Walnut	Gloss Black, Matte White, Red Walnut	Gloss Black, Matte White, Red Walnut
Frequency Response	60–25,000 Hz ±3 dB	50–25,000 Hz ±3 dB	65–25,000 Hz ±3 dB	50–25,000 Hz ±3 dB	46–25,000 Hz ±3 dB	40–25,000 Hz ±3 dB	35–25,000 Hz ±3 dB
Dispersion	80° x 80°	80° x 30°	80° x 80°	80° x 30°	80° x 80°	80° x 80°	80° x 30°
Sensitivity	92 dB @ 2.83 volts/meter	92 dB @ 2.83 volts/meter	91 dB @ 2.83 volts/meter	94 dB @ 2.83 volts/meter	90 dB @ 2.83 volts/meter	92 dB @ 2.83 volts/meter	94 dB @ 2.83 volts/ meter
Impedance	5 ohms. Compatible with 4, 6, or 8 ohm rated amplifiers.	4 ohms. Compatible with 4, 6 or 8 ohm rated amplifiers.	4 ohms. Compatible with 4, 6 or 8 ohm rated amplifiers.	4 ohms. Compatible with 4, 6 or 8 ohm rated amplifiers.	4 ohms. Compatible with 4, 6 or 8 ohm rated amplifiers.	4 ohms. Compatible with 4, 6 or 8 ohm rated amplifiers.	4 ohms. Compatible with 4, 6 or 8 ohm rated amplifiers.
Crossover Frequency	2700 Hz	2200 Hz	400 & 2600 Hz	900 & 2200 Hz	500 & 2600 Hz	500 & 2600 Hz	400 & 2200 Hz
High Frequency Drivers	1 x 1.4 inch (2.6 x 3.6 cm) Folded Motion Transducer with 5.25 x 1.75 inch (13.3 x 4.4 cm) diaphragm.	1.25 x 2.4 inch (3.2 x 6.1 cm) Folded Motion Transducer with 4.5 x 2.75 inch (11.4 x 7 cm) diaphragm.	1 x 1.4 inch (2.6 x 3.6 cm) Folded Motion Transducer with 5.25 x 1.75 inch (13.3 x 4.4 cm) diaphragm.	1.25 x 2.4 inch (3.2 x 6.1 cm) Folded Motion Transducer with 4.5 x 2.75 inch (11.4 x 7 cm) diaphragm.	1 x 1.4 inch (2.6 x 3.6 cm) Folded Motion Transducer with 5.25 x 1.75 inch (13.3 x 4.4 cm) diaphragm.	1 x 1.4 inch (2.6 x 3.6 cm) Folded Motion Transducer with 5.25 x 1.75 inch (13.3 x 4.4 cm) diaphragm.	1.25 x 2.4 inch (3.2 x 6.1 cm) Folded Motion Transducer with 4.5 x 2.75 inch (11.4 x 7 cm) diaphragm.
Mid Frequency Drivers	—	—	—	—	—	5.5-inch (14 cm) aluminum cone with cast polymer basket. Non-resonant asymmet- rical chamber format. Rigid structured dust cap to reduce cone breakup modes.	6.5-inch (16.5 cm) aluminum cone with cast polymer basket. Sealed chamber format. Rigid structured dust cap to reduce cone break-up modes.
Low Frequency Drivers	5.25-inch (13.3 cm) aluminum cone with cast aluminum basket. Non-resonant asymmetrical chamber format. Rigid structured dust cap to reduce cone breakup modes.	6.5-inch (16.5 cm) aluminum cone with cast polymer basket. Non-resonant asym- metrical chamber format. Rigid structured dust cap to reduce cone breakup modes.	Two 5.5-inch (14 cm) aluminum cone with cast polymer basket. Non-resonant asym- metrical chamber format. Rigid structured dust cap to reduce cone breakup modes.	Two 6.5-inch (16.5 cm) aluminum cone with cast polymer basket. Non-resonant asymmetrical chamber format. Rigid structured dust cap to reduce cone breakup modes.	Two 5.5-inch (14 cm) aluminum cone with cast polymer basket. Non-resonant asym- metrical chamber format. Rigid structured dust cap to reduce cone breakup modes.	Two 6.5-inch (16.5 cm) aluminum cone with cast polymer basket. Non-resonant asymmetrical chamber format. Rigid structured dust cap to reduce cone breakup modes.	Two 8-inch (20.3 cm) aluminum cone with cast aluminum basket. Non-resonant asymmetrical chamber format. Rigid structured dust cap to reduce cone breakup modes.
Cabinet	Ported	Ported	Ported	Ported	Ported	Ported	Ported
Components	Custom air core coil and low DCR steel laminate inductors. Polypropylene film capacitors in series and low DF electrolytic capacitors in parallel. Overall system thermal/current protection.	Custom air core coil and low DCR steel laminate inductors. Polypropylene film capacitors in series and low DF electrolytic capacitors in parallel. Tweeter thermal/current protection.	Custom air core coil and low DCR steel laminate inductors. Polyester film capacitors in series and low DF electrolytic capacitors in parallel. Tweeter thermal/current protection.	Custom air core coil and low DCR steel laminate inductors. Polypropylene film capacitors in series and low DF electrolytic capacitors in parallel. Tweeter thermal/current protection.	Custom air core coil and low DCR steel laminate inductors. Polyester film capacitors in series and low DF electrolytic capacitors in parallel. Tweeter thermal/current protection.	Custom air core coil and low DCR steel laminate inductors. Polyester film capacitors in series and low DF electrolytic capacitors in parallel. Tweeter thermal/current protection.	Custom air core coil and low DCR steel laminate inductors. Polyester film capacitors in series and low DF electrolytic capacitors in parallel. Tweeter thermal/current protection.
Recommended Amp Power	20–200 watts	20–250 watts	20–200 watts	20–300 watts	20–200 watts	20–300 watts	20–400 watts
Binding Post Inputs	Custom 5-way tool-less	Custom 5-way bi-wire tool-less	Custom 5-way tool-less	Custom 5-way bi-wire tool-less	Custom 5-way bi-wire tool-less	Custom 5-way bi-wire tool-less	Custom 5-way bi-wire tool-less
Accessories (included)	Rubber pads	Rubber pads	Rubber pads	Rubber pads	ETC spikes, Rubber feet	ETC spikes, Rubber feet	Outriggers, ETC spikes, Rubber feet
Recommended Subwoofers	Dynamo Series	Dynamo Series	Dynamo Series	Dynamo Series	Dynamo Series	Dynamo Series	Dynamo Series
Weight	12 lb (5.4 kg)	17 lb (7.7 kg)	18 lb (8.2 kg)	29 lb (13.2 kg)	33 lb (15 kg)	45 lb (20.4 kg)	66 lb (30 kg)
Dimensions (HxWxD)	11.42 x 6.81 x 9.38 inch (290 x 173 x 238.25 mm)	13.5 x 7.56 x 11.68 inch (343 x 192 x 296.75 mm)	6.89 x 16.54 x 10.16 inch (174.95 x 420 x 258 mm)	7.56 x 22.83 x 12.52 inch (192 x 580 x 318 mm)	36.56 x 6.81 x 11.78 inch (928.74 x 173 x 299.21 mm)	42.49 x 7.56 x 12.81 inch (1079.12 x 192 x 325.25 mm)	47.95 x 11.42 x 14.38 inch (1217.93 x 290 x 320 mm)