

# SMARTPATH IR SYSTEM for a clean installation.

IR Kit enables remote control signal access to the hidden components of your system.



Since 1969, SpeakerCraft has innovated connectivity solutions that make electronics work better together. Our latest innovation in IR repeater technology provides ultimate flexibility and performance in one convenient package.

The SMARTPATH IR SYSTEM is a convertible IR Receiver Kit that can be adapted to almost any surface mount, flush mount or shelf mount application. It includes all of the parts necessary for installing a single-room IR Repeater System for controlling a TV, Audio/Video Receiver, Blu-ray player, Cable Box, Satellite Receiver...just about any IR controlled A/V home entertainment device.

The kit includes an IR Receiver that can be attached to the front of a TV, or extended from behind on flat panel TVs that have a minimal frame around the display area or a curved surface. The receiver can also be adapted to a low-profile shelf-top case or cabinet door adapter for controlling IR components hidden in an equipment cabinet.



SMARTPATH IRC 4.0 IR Kit

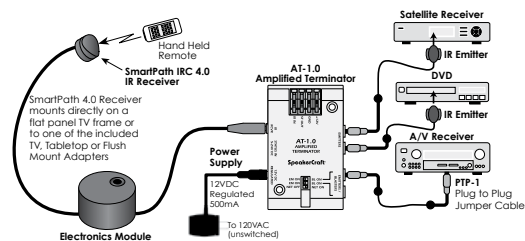
## FEATURES

- IR Receiver shelf mount, flush mount, surface mount and TV mount adapters allow installation almost anywhere
- IR Receiver compatible with most Plasma, LCD and LED TVs
- IR Receiver compatible with most CFL light bulbs
- Includes one 789-44 Connecting Block, one 781ERGPS Power Supply, and four 283D IR Emitters for easy system installation

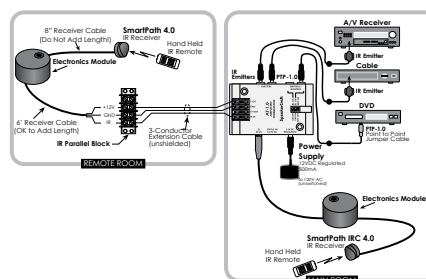
# SpeakerCraft®

# SMARTPATH IRC 4.0 INSTALLATION OPTIONS

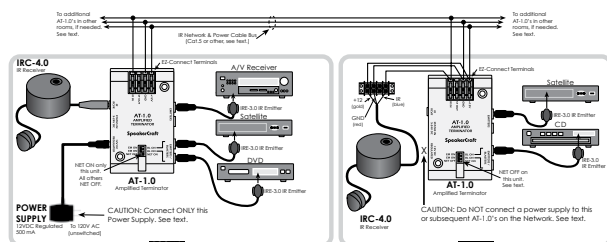
## 1. TYPICAL CONNECTIONS



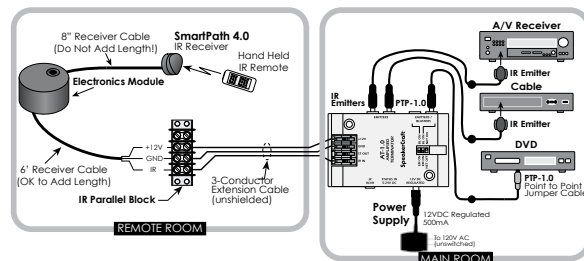
## 2. EXTENDING THE IR RECEIVER WIRE



## 3. MULTI-ROOM APPLICATION



## 4. BIDIRECTIONAL IR CONTROL



## PARTS AND ACCESSORIES INCLUDED:



SmartPath IRC 4.0 IR Receiver



Tabletop Adapter



AT-1.0 Amplified Terminator



TV Mount Adapter



12V DC Power Supply

1 sheet) Double-sided adhesives for mounting sensors



PTP-1 Plug to plug Jumper

## SPECIFICATIONS

- Infrared carrier frequency bandwidth 30-55 kHz
- Reception range Up to 80 feet\*
- Reception angle +/- 45°
- Max. Transmission length 1 mile using 18 gauge wire

\* Depending on remote control output strength and ambient conditions.

- Maximum current output 100mA
- IR Receiver Dimensions .55" diameter (14mm)
- Power requirements +12VDC, 100mA

Specifications subject to change due to product upgrades and improvements.

## ORDERING AND SHIPPING

MODEL: ASM/ELT00001	Dimensions	Weight	Qty.	UPC NUMBER
Individual Box	5.75" W x 8" H x 3" D	1 lb.	1	664254014727
Master Pack	18.75" W x 12.5" H x 16" D	25.00 lb.	24	10664254014724

**SpeakerCraft**

Core Brands LLC, • 1800 S. McDowell Blvd., Petaluma CA 95454 [www.speakercraft.com](http://www.speakercraft.com)

© 2014 Core Brands LLC. All rights reserved. Speakercraft is a registered trademark of Core Brands LLC, a Nortek company.